

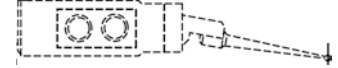
Styli

Applicable models ■ E-DT-R32A (R30, R40, R31, R41, R43, Touch) ■ E-DT-R74A (R47, R55, R60A, R65A) ■ E-DT-R272A (Touch)

1:1 Standard Sensitivity L = 17 mm			
Measuring application	Model	External view	Specifications
General purpose	0194 000		Φ 3.2 mm Carbide ball
Small holes	0194 001		Φ 1 mm Carbide ball
General purpose	0194 002		Φ 1.6 mm Carbide ball - Standard stylus
Extra small holes	0194 009		Φ 0.5 mm Carbide ball
Grooves	0194 003		R0.25 mm, 55° conical Sapphire, L-type, L = 4.5 mm
Deep grooves	0194 004		R0.25 mm, 55° conical Sapphire, L-type, L = 10 mm
Corners	0194 005		R0.25 mm, 55° conical sapphire, L-type, L = 3.4 mm/30°
Grooves	0194 006		R0.25 mm, 55° conical Sapphire, T-type, L = 6.5 mm
	0194 007		R0.25 mm, 55° conical Sapphire, T-type, L = 10 mm
Deep grooves	0194 008		R0.25 mm, 55° conical Sapphire, T-type, L = 20 mm
Cutter mark removal	0194 010		R0.25 mm Sapphire, L-type, L = 4.8 mm/R15 mm
Extra small holes	EM49030-S361		Φ 0.5 mm Ruby ball
	EM49030-S381		Φ 0.3 mm Ruby ball

2:1 Sensitivity L = 54 mm			
Measuring application	Model	External view	Specifications
General purpose	0194 200		Φ 3.2 mm Carbide ball
Small holes	0194 201		Φ 1 mm Carbide ball
General purpose	0194 202		Φ 1.6 mm Carbide ball
Extra small holes	0194 209		Φ 0.5 mm Carbide ball
Grooves	0194 203		R0.25 mm, 55° conical Sapphire, L-type, L = 4.5 mm
Deep grooves	0194 204		R0.25 mm, 55° conical Sapphire, L-type, L = 10 mm
Corners	0194 205		R0.25 mm, 55° conical Sapphire, L-type, L = 3.4 mm/30°
Grooves	0194 206		R0.25 mm, 55° conical Sapphire, T-type, L = 6.5 mm
	0194 207		R0.25 mm, 55° conical Sapphire, T-type, L = 10 mm
Deep grooves	0194 208		R0.25 mm, 55° conical Sapphire, T-type, L = 20 mm
Cutter mark removal	0194 210		R0.25 mm Sapphire, L-type, L = 4.8 mm/R15 mm

3:1 Sensitivity L = 92 mm			
Measuring application	Model	External view	Specifications
General purpose	0194 400		Φ 3.2 mm Carbide ball
Small holes	EM49201-S375		Φ 1 mm Ruby ball
General purpose	EM49201-S374		Φ 1.6 mm Ruby ball
Deep grooves	EM49201-S315		R0.25 mm, 55° conical Sapphire, L-type, L = 10 mm
Grooves	EM49201-S361		R0.25 mm, 55° conical Sapphire, T-type, L = 6.5 mm
Extra small holes	EM49201-S376		Φ 0.5 mm Ruby ball



Styli

Applicable models ■ E-DT-R95A (R30, R40, R31, R41, R43) ■ E-DT-R83A (R47, R55, R60A, R65A, R65B) ■ E-DT-R120A (R44, R54, R-NEX,R-NEX Rs, R55, R60A, R65A, R65B)

1: 1 Standard Sensitivity L = 59.5 mm

Measuring application	Model	External view	Specifications
General purpose	EM46000-S300		Φ 3.2 mm Carbide ball
Small holes	EM46000-S301		Φ 1 mm Carbide ball
General purpose	EM46000-S302		Φ 1.6 mm Carbide ball Standard stylus
Grooves	EM46000-S303		R0.25 mm, 55° conical Sapphire, L-type, L = 4.5 mm
Deep grooves	EM46000-S304		R0.25 mm, 55° conical Sapphire, L-type, L = 10 mm
Corners	EM46000-S305		R0.25 mm, 55° conical Sapphire, L-type, L = 3.4 mm/60°
Grooves	EM46000-S306		R0.25 mm, 55° conical Sapphire, T-type, L = 6.5 mm
	EM46000-S307		R0.25 mm, 55° conical Sapphire, T-type, L = 10 mm
Deep grooves	EM46000-S308		R0.25 mm, 55° conical Sapphire, T-type, L = 20 mm
Extra small holes	EM46000-S309		Φ 0.5 mm Carbide ball
Cutter mark removal	EM46000-S310		R0.25 mm Sapphire, L type, L = 4.8 mm/R15 mm

1.5:1 Sensitivity L = 97 mm

Measuring application	Model	External view	Specifications
General purpose	EM46100-S300		Φ 3.2 mm Carbide ball
Small holes	EM46100-S301		Φ 1 mm Carbide ball
General purpose	EM46100-S302		Φ 1.6 mm Carbide ball
Grooves	EM46100-S303		R0.25 mm, 55° conical Sapphire, L-type, L = 4.5 mm
Deep grooves	EM46100-S304		R0.25 mm, 55° conical Sapphire, L-type, L = 10 mm
Corners	EM46100-S305		R0.25 mm, 55° conical Sapphire, L-type, L = 3.4 mm/60°
Grooves	EM46100-S306		R0.25 mm, 55° conical Sapphire, T-type, L = 6.5 mm
	EM46100-S307		R0.25 mm, 55° conical Sapphire, T-type, L = 10 mm
Deep grooves	EM46100-S308		R0.25 mm, 55° conical Sapphire, T-type, L = 20 mm
Extra small holes	EM46100-S309		Φ 0.5 mm Carbide ball
Cutter mark removal	EM46100-S310		R0.25 mm Sapphire, L type, L = 4.8 mm/R15 mm
Stylus attachment	EM-59103-S001		Used when 2: 1 stylus for detectors [E-DT-R32A/E-DT-R74A] is mounted on detectors [E-DT-R83A/E-DT-R95A/E-DT-R120A]

Detectors

Applicable models ■ R30/31 ■ R40/41 ■ R43 ■ R44 ■ R47 ■ R54 ■ R-NEX, R-NEX Rs ■ R55 ■ R60A ■ R65A ■ R65B

Name	Model	External view	Specifications	Remarks
General purpose detector	E-DT-R32A (E-DT-R272A)		Measuring range: ±400 μm Measuring force: 70 mN Front adjustment mechanism ID/OD switch function	Applicable models: R30/31, R40/41, R43 Information in () is for Touch. Stylus: Φ 1.6 carbide ball (0194 002) option
	E-DT-R74A	R32A: L = 25 mm R74A: L = 45 mm	Measuring range: ±800 μm Measuring force: 70 mN Front adjustment mechanism ID/OD switch function	Applicable models: R47, R55, R60A, R65A Stylus: Φ 1.6 carbide ball (0194 002) option
Detector/ styli set	E-DT-R37A		General purpose stylus: 0194 000 Φ 3.2 carbide ball Small hole stylus: 0194 001 Φ 1 carbide ball	Set of detector [E-DT-R32A] and styli listed to the left
	E-DT-R76A		Deep groove stylus: 0194 004 Sapphire Groove stylus: 0194 007 Sapphire	Set of detector [E-DT-R74A] and styli listed to the left
Low measuring force detector	E-DT-R10A		Measuring range: ±400 μm Measuring force: 5 mN	Applicable models: R30/31, R40/41, R43 Stylus: Φ 1.6 ruby ball (010 2505) provided (cable length: 1.5 m)
	E-DT-R87A			Applicable models: R47, R55, R60A, R65A Stylus: Φ 1.6 ruby ball (010 2505) provided Combination with detector holder: [E-DH-R639A] and C46 conversion adapter (cable length: 0.5 m)
Low measuring force detector	E-DT-R173A		Measuring range: ±400 μm Measuring force: 5 mN	Applicable models: R47, R55, R65A Combination with detector holder: [E-DH-R636A] Applicable models: R55, R65A (each comes with CNC holder) Combination with detector holder: [E-DH-R636A] and C6L6 conversion adapter Applicable model: R60A Combination with detector holder: [E-DH-R603A] Applicable model: R60A (with CNC holder) Combination with detector holder: [E-DH-R603A] and C6L6 conversion adapter
	E-DT-R168B			Applicable models: R55, R65A (with CNC holder) Combination with detector holder: [E-DH-R636A] Applicable model: R60A (with CNC holder) Combination with detector holder: [E-DH-R603A] Applicable models: R44, R54 Combination with offset detector holder: [E-DH-R749A]
General purpose stylus for low measuring force detector	010 2505			Applicable detectors: E-DT-R10A, E-DT-R87A, E-DT-R172A, E-DT-R173A, E-DT-R168B Stylus: Φ 1.6 mm ruby ball
Small hole stylus for low measuring force detector	010 2516			Applicable detectors: E-DT-R10A, E-DT-R87A, E-DT-R172A, E-DT-R173A, E-DT-R168B Stylus: Φ 1 mm ruby ball

Name	Model	External view	Specifications	Remarks
General purpose detector	E-DT-R83A		Measuring range: ±1000 µm Measuring force: 30 mN to 100 mN Front adjustment mechanism ID/OD switch function	Applicable models: R47, R55, R60A, R65A With detector safety device
	E-DT-R95A		Measuring range: ±1000 µm Measuring force: 30 mN to 100 mN Front adjustment mechanism ID/OD switch function	Applicable models: R31, R41, R43
	E-DT-R120A		Measuring range: ±1000 µm Measuring force: 30 mN to 100 mN Front adjustment mechanism ID/OD switch function	Applicable models: R55, R60A, 65A For the E-DH-669A full automatic detector holder Applicable models: R44 and R54 For offset type detector holder: E-DH-R749A/R774A/R770A
Detector stylus set	E-DT-R106A		General purpose stylus [EM46000-S300] Φ 3.2 mm carbide ball	Set of detector [E-DT-R83A] and styli listed to the left
	E-DT-R141A		Small hole stylus [EM46000-S301] Φ 1 mm carbide ball	Set of detector [E-DT-R120A] and styli listed to the left
	E-DT-R107A		Deep groove stylus [EM46000-S304] Sapphire, L-type, L = 10 mm	Set of detector [E-DT-R95A] and styli listed to the left
Deep hole detector	E-DT-R44A		Throat height H: 199.5 mm Throat depth D: 143.3 mm Magnification: 2000x or less	Applicable model: R60A Combination with C46 conversion adapter Combination with C4L6 conversion adapter (when CNC holder is used)
	E-DT-R105A		Throat height H: 199.5 mm Throat depth D: 143.3 mm Magnification: 2000x or less	Applicable models: R31, R41, R43, R47, R55, R65A Combination with C46 conversion adapter Combination with C4L6 conversion adapter (when CNC holder is used)
	E-DT-R163A		Throat height H: 199.5 mm Throat depth D: 143.3 mm Magnification: 2000x or less	Applicable models: R44, R54 (80 mm offset specification) Combination with horizontal feed coupling [E-DT-R772A]
Thin detector	E-DT-R140A		Detection range: ±200 µm Measuring force: 15 mN Front travel: 500 µm to 700 µm	Applicable models: R47, R55, R65A Detector holder: E-DH-R653A/R708A/R725A Applicable models: R55, R65A (when CNC holder is used) Combination with detector holder [E-DH-R653A/R708A/R725A] and C6L6 conversion adapter Applicable model: R60A (when CNC holder is used) Combination with detector holder [E-DH-R608A/R707A/R724A] and C6L6 conversion adapter
	E-DT-R130A			Applicable models: R55, R65A (when CNC holder is used) Combination with detector holder [E-DH-R653A/R708A/R725A] Applicable model: R60A (when CNC holder is used) Combination with detector holder [E-DH-R608A/R707A/R724A]

Detector Holders

Applicable models ■ R30/31 ■ R40/41 ■ R43 ■ R44 ■ R47 ■ R54 ■ R55 ■ R60A ■ R65A ■ R65B

Name	Model	External view	Specifications	Remarks
Detector holder	E-DH-R639A (E-DH-R384A)		Throat height H: 90.5 mm Throat depth D: 68 mm	Applicable models: R47, R55, R65A Combination detector: E-DT-R74A, E-DT-R87A Information in () is for R60A.
	E-DH-R617A			Applicable models: R31, R41, R43 (standard accessory) Combination detector: E-DT-R32A, E-DT-R10A
	E-DH-R149A		ID measuring range: $\phi 31\text{ mm}$ Magnification: 2000x or less Stylus sensitivity: 1:1	Applicable models: R31, R41, R43, R47, R55, R60A, R65A Combination detector: E-DT-R32A, E-DT-R74A
Detector holder coupling	E-DH-R80A		Throat height H: 128 mm Throat depth D: 68 mm to 84 mm Magnification: 2000x or less Stylus sensitivity: 2:1	Applicable models: R31, R41, R43, R47, R55, R60A, R65A Combination detector: E-DT-R32A, E-DT-R74A
	E-DH-R327A		Throat height H: 128 mm Throat depth D: 115 mm Magnification: 1000x or less Stylus sensitivity: 2:1	
	E-DH-R354A		Throat height H: 165 mm Throat depth D: 68 mm to 84 mm Magnification: 5000x or less Stylus sensitivity: 3:1	
	E-DH-R348A		Throat height H: 165 mm Throat depth D: 115 mm Magnification: 2000x or less Stylus sensitivity: 3:1	
Detector holder	E-DH-R329A		Throat height H: 300 mm (ID $\phi 31\text{ mm}$ or more) Throat depth D: 60 mm ID measuring range: $\phi 16\text{ mm}$ to $\phi 300\text{ mm}$ Magnification: 1000x or less Stylus sensitivity: 1:1 to 3:1	Applicable models: R31, R41, R43, R47, R55, R60A, R65A Combination detector: E-DT-R32A, E-DT-R74A
	E-DH-R317A		Throat height H: 170 mm Throat depth D: 115 mm ID measuring range: $\phi 20\text{ mm}$ to $\phi 300\text{ mm}$ Magnification: 2000x or less Stylus sensitivity: 1:1 to 3:1	Applicable model: R60A Combination detector: E-DT-R74A
	E-DH-R636A (E-DH-R603A)		Throat height H: 154 mm Throat depth D: 68 mm	Applicable models: R47, R55, R65A Combination detectors: E-DT-R83A, E-DT-R173A, E-DT-R120A, E-DT-R168A Information in () is for R60A.
	E-DH-R618A		Throat height H: 154 mm Throat depth D: 68 mm	Applicable models: R31, R41, R43 Combination detector: E-DT-R95A
Detector holder coupling	E-DH-R613A		Throat height H: 192 mm Throat depth D: 68 mm Magnification: 5000x or less Stylus sensitivity: 1.5:1	Applicable models: R47, R55, R60A, R65A Combination detectors: E-DT-R83A, E-DT-R173A, E-DT-R120A, E-DT-R168A Applicable models: R31, R41, R43 Combination detector: E-DT-R95A
Detector holder	E-DH-R678A		Throat height H: 192 mm Throat depth D: 120 mm Magnification: 5000x or less Stylus sensitivity: 1.5:1	Applicable models: R47, R55, R60A, R65A Combination detectors: E-DT-R83A, E-DT-R173A, E-DT-R120A, E-DT-R168A Applicable models: R31, R41, R43 Combination detector: E-DT-R95A

CNC Detector Holders

Applicable models ■ R55 ■ R60A ■ R65A ■ R65B

Name	Model	External view	Specifications	Remarks
CNC Detector Holders	E-DH-R665A (E-DH-R669A)		Throat height H: 151 mm Throat depth D: 55 mm	Applicable models: R60A, R65A Information in () is for R55. Combination detector: E-DT-R120A
CNC Detector Holders	E-DH-R677A		Throat height H: 151 mm Throat depth D: 135 mm Magnification: 5000x or less Stylus sensitivity: 1.5:1	Applicable models: R60A, R65A Combination detector: E-DT-R120A Combination link cable: EE74017 (70 mm)
CNC Detector Holders	E-DH-R720A		Throat height H: 151 mm Throat depth D: 96 mm Magnification: 10000x or less	Applicable models: R60A, R65A Combination detector: E-DT-R120A Combination link cable: EE74023 (30 mm)
CNC Detector Holders 1.5:1 type	E-DH-R690A		Throat height H: 189 mm Throat depth D: 55 mm Magnification: 5000x or less Stylus sensitivity: 1.5:1	Applicable models: R55, R60A, R65A Combination detector: E-DT-R120A Combination detector holder: E-DH-R669A/R665A Combination link cable: EE74023 (30 mm) Combination holder cable: EE74022 (30 mm)

Offset Type Detector Holders

Applicable models ■ R44 ■ R54 ■ R55 ■ R60A ■ R65A ■ R65B

Name	Model	External view	Specifications	Remarks
Offset type detector holder	E-DH-R749A		Throat height H: 153 mm Throat depth D: 65 mm	Applicable models: R44, R54 *R55, R60A, R65A Combination detector: E-DT-R120A
Offset type detector holder 1.5:1 type	E-DH-R774A		Throat height H: 191 mm Throat depth D: 65 mm Cutoff filter: 15, 50 peaks/rotation Stylus sensitivity: 1.5:1	Applicable models: R44, R54 *R55, R60A, R65A Combination detector: E-DT-R120A
Offset type CNC detector holder	E-DH-R770B		Throat height H: 153 mm Throat depth D: 65 mm	Applicable models: R54 *R55, R60A, R65A Combination detector: E-DT-R120A
Offset type CNC detector holder 1.5:1 type	E-DH-R779A		Throat height H: 191 mm Throat depth D: 65 mm	Applicable models: R54 *R55, R60A, R65A Combination detector: E-DT-R120A

* R55, R60A, R65A and R65B additionally require horizontal feed device for offset detector holder.

Special Detector Holders

Applicable models ■ R30/31 ■ R40/41 ■ R43 ■ R47 ■ R55 ■ R60A ■ R65A ■ R65B

Name	Model	External view	Specifications	Remarks
Plane measurement holder	E-DH-R391A			Applicable models: R30, R31, R40, R41, R43, R60A Combination detector: E-DT-R74A, E-DT-R32A, E-DT-R10A, E-DT-R87A
	E-DH-R614A			Applicable models: R47, R55, R60A, R65A Combination detector: E-DT-R83A, E-DT-R95A, E-DT-R120A, E-DT-R173A, E-DT-R168A
Thin detector holder	E-DH-R708A			Applicable models: R47, R55, R60A, R65A Measuring diameter: R = 130 mm, R1 = 135 mm Detector: E-DT-R130A, E-DT-R140A
	E-DH-R653A			Applicable models: R47, R55, R60A, R65A Measuring diameter: R = 115 mm, R1 = 120 mm Detector: E-DT-R130A, E-DT-R140A
	E-DH-R725A		Max. measuring magnification: 2000x Filter: 15, 50 peaks/rotation Measuring Accuracy: 0.5 μm	Applicable models: R47, R55, R60A, R65A Measuring diameter: R = 145 mm, R1 = 150 mm Detector: E-DT-R130A, E-DT-R140A
	E-DH-R707A			Applicable model: R60A (when CNC holder is used) Measuring diameter: R = 130 mm, R = 135 mm Detector: E-DT-R130A
	E-DH-R608A			Applicable model: R60A (when CNC holder is used) Measuring diameter: R = 115 mm, R1 = 120 mm Detector: E-DT-R130A
	E-DH-R724A			Applicable model: R60A (when CNC holder is used) Measuring diameter: R = 145 mm, R1 = 150 mm Detector: E-DT-R130A
Non-contact detector holder	E-DH-R714A		Throat height H: 90 mm Throat depth D: 55 mm	Applicable models: R30, R31, R40, R41, R43, R47, R55, R60A, R65A Combination with non-contact detector E-DT-SL12B Note: CNC detector holder mounter requires extra adaptor to install this holder.

Calibrators

Applicable models ■ R30/31 ■ R40/41 ■ R43 ■ R44 ■ R47 ■ R54 ■ R55 ■ R60A ■ R65A

Name	Model	External view	Specifications	Remarks
Magnification calibration set	E-MC-R04A		Max. calibration range: 400 μm Min. scale interval: 0.2 μm Weight: 1.7 kg	Applicable Models: E-DT-R32A E-DT-R74A E-DT-R87A E-DT-R10A
	E-MC-R33A		Max. calibration range: 400 μm Min. scale interval: 0.2 μm Weight: 1.7 kg	Applicable Models: E-DT-R83A E-DT-R95A, R120A E-DT-R87A E-DT-R10A E-DT-R32A E-DT-R74A E-DT-R173A E-DT-R168A
Magnification calibration master	E-MC-R28A		Level difference: Approx. 20 μm	Applicable models: All models
Master ball	E-MG-R05B		Sphericity: 0.05 μm Material: Chrome bearing steel	Applicable models: All models E-MG-R05B provided with wooden box. (R60A, R65A: standard accessory)
	E-MG-R01B			
	E-MG-R95A		Roundness: 0.035 μm Diameter: Φ 56.2 mm Material: Zerodur	Applicable models: All models Provided with wooden box.
Cylindrical square	E-MG-R06A		Cylindricity: 1 μm/150 mm Squareness: 2 μm Dimensions: Φ 60 mm x Φ 150 mm	Applicable models: All models
	E-MG-R08A		Cylindricity: 1.3 μm/200 mm Squareness: 2.5 μm Dimensions: Φ 60 mm x Φ 200 mm	
	E-MG-R83A		Cylindricity: 2 μm/400 mm Squareness: 5 μm Dimensions: Φ 92 mm x Φ 400 mm	
High accuracy cylindrical square	E-MG-R87A	<i>øA R: Refer to size</i>	Cylindricity: 0.28 μm/100 mm Squareness: 2 μm Dimensions: Φ 60 mm x Φ 150 mm	
Diameter master	E-MG-R88A		OD: Φ 24.5 mm I D: Φ 13.7 mm Actual measured value inscribed	Applicable Models: R60A, R65A, R44, R54

Peripherals

Applicable models ■ R30/31 ■ R40/41 ■ R43 ■ R44 ■ R47 ■ R54 ■ R55 ■ R60A ■ R65A


Name	Model	External view	Specifications	Remarks
Bench	E-DK-R56A			Applicable models: R30, R31, R40, R41, R43, Touch Dimensions: 570 mm (W) x 490 mm (D) x 652 mm (H)
Bench for desktop anti-vibration table	E-VS-S13A			For E-VS-S57A/B, E-VS-S58A Dimensions: 510 mm (W) x 430 mm (D) x 643 mm (H) Weight: 22 kg
Desktop anti-vibration table	E-VS-S57B		Anti-vibration system: Diaphragm air spring Natural frequency: 2.5 Hz to 3.5 Hz Load weight: 130 kg	Dimensions: 600 mm (W) x 530 mm (D) x 60 mm (H) Air Source: 350 kPa to 700 kPa Weight: 25 kg
Anti-vibration table (H: 700)	E-VS-R16B		Anti-vibration system: Diaphragm air spring Natural frequency: V = 2 Hz, H = 2.2 Hz Load weight: 250 kg Air Source: 350 kPa to 700 kPa	Applicable models: R44, R54 Dimensions: 980 mm (W) x 780 mm (D) x 700 mm (H) 760 mm (W1) x 560 mm (D1) Weight: 190 kg
	E-VS-S21B		Anti-vibration system: Diaphragm air spring Natural frequency: V = 1.6 Hz, H = 2 Hz Load weight: 550 kg Air Source: 350 kPa to 700 kPa	Applicable models: R55, R47, R60 Dimensions: 1074 mm (W) x 824 mm (D) x 700 mm (H) 850 mm (W1) x 560 mm (D1) Weight: 340 kg
Anti-vibration table (H: 500)	E-VS-R20B		Anti-vibration system: Diaphragm air spring Natural frequency: V = 1.5 Hz, H = 2 Hz Load weight: 550 kg Air Source: 350 kPa to 700 kPa	Applicable models: R55, R47, R60 Dimensions: 1074 mm (W) x 824 mm (D) x 500 mm (H) 850 mm (W1) x 560 mm (D1) Weight: 340 kg
Anti-vibration table (H: 500) High magnification measuring	E-VS-R24A		Anti-vibration system: Diaphragm air spring Natural frequency: V = 2.2 Hz, H = 2.5 Hz Load weight: 600 kg Air Source: 350 kPa to 700 kPa	Applicable model: R60A (Z800) Dimensions: 1060 mm (W) x 875 mm (D) x 500 mm (H) 820 mm (W1) x 640 mm (D1) Weight: 380 kg
Bench	E-DK-R16A			Applicable models: R44, R54 Dimensions: 700 mm (W) x 600 mm (D) x 700 mm (H)
Desk	E-DK-R19A			Applicable models: All models Dimensions: 1000 mm (W) x 600 mm (D) x 700 mm (H)
	E-DK-R34A			Applicable models: All models Dimensions: 400 mm (W) x 700 mm (D) x 700 mm (H)
System rack	E-DK-S24A			Dimensions: 800 mm (W) x 800 mm (D) x (1070 mm to 1370 mm) (H) Weight: 44.5 kg
	E-DK-S25A			Dimensions: 1200 mm (W) x 800 mm (D) x (1070 mm to 1370 mm) (H)

Name	Model	External view	Specifications	Remarks
Power transformer box	E-TF-R25A		Input: 90 V to 240 V Output: 100 V Capacitance: 2.1 kVA	Please specify input voltage. Dimensions: 300 mm (W) x 350 mm (D) x 296 mm (H) Weight: 45 kg
Water separator	L-WF-R08A			Applicable models: All models Dimensions: 100 mm (W) x 80 mm (D) x 280 mm (H)
Oil separator	L-WF-R07A		Filtration: 0.1 µm	Applicable models: All models Dimensions: 100 mm (W) x 190 mm (H) Weight: 1.7 kg
Air purifier set	L-WF-R11A		Install L-WF-R08A water separator, L-WF-R07A oil separator on mounting plate	Applicable models: All models Dimensions: 320 mm (W) x 170 mm (D) x 378.5 mm (H)
Refrigerating type air dryer	L-WF-R03B		Max. flow: 100 L/min Power consumption: 165 W/195 W (50 Hz/60 Hz) Weight: 15 kg	Applicable models: All models (table rotating type) Dimensions: 200 mm (W) x 350 mm (D) x 400 mm (H) For AC 100 V
	L-WF-R27A		Max. flow: 200 L/min Power consumption: 210 W (50 Hz/60 Hz) Weight: 27 kg	Applicable models: All models (table rotating type) Dimensions: 226 mm (W) x 410 mm (D) x 445 mm (H) For AC 200 V to 240 V Separate transformer type
	L-WF-R24A		Max. flow: 200 L/min Power consumption: 180 W/202 W (50 Hz/60 Hz) Weight: 18 kg	Applicable models: All models (table rotating type) Dimensions: 226 mm (W) x 410 mm (D) x 473 mm (H) For AC 230 V CE marking

Standard Inventory Parts

Consumables

Name	Model	Applicable system	Remarks
Polar recording paper	E-CH-R04A	10A, 20A, 50A/B, 52A/B, 70A/B, 71A/B	Thermal recording paper 100 sheets/box
	Polar A4 trace sepia	6A, 50A/B-400, 70A/B, 71A/B-400 amplifier	Piston type, 100 sheets/box
Rectilinear recording paper	E-CH-R05A	50B, 52B, 70B, 71B	Thermal recording paper 10 rolls/box Recording width: 40 mm
	I-250-125	6A, 50A/B-400, 70A/B, 71A/B-400 amplifier	Piston type, 10 rolls/box
Printing Paper	E-CH-R06A	30A/B/C, 40A/C, 45A	Thermal recording paper 10 rolls/box Recording width: 104 mm
	E-CH-S05A	50B, 52B, 70B, 71B-300 amplifier	Thermal recording paper 10 rolls/box Recording width: 40 mm
Recording paper	E-CH-S03A	50A/B, 52A/B, 70A/B, 71A/B-500 amplifier	Thermal recording paper 10 rolls/box Recording width: 120 mm
IC pen	KT202-A	10A, 20A, 50A/B, 52A/B, 70A/B, 71A/B, 15MA	Substitute for KT102 (Adjustment required by our engineer at the first installation)
Polar marking pen	CP-192 (red)	6A, 50A/B-400, 70A/B, 71A/B-400 amplifier	Piston type
Rectilinear marking pen	CP-092 (red)	6A, 50A/B-400, 70A/B, 71A/B-400 amplifier	Piston type
Filter element	AFD20P-060AS	15MA, 30C, 31C, 40C, 41C, 43C, 46A, 47A/B, 44DX/SD, 54DX/SD, 55A/B, 60A, 65A	
Micro filter element	AFM20P-060AS	15MA, 30C, 31C, 40C, 41C, 43C, 46A, 47A/B, 44DX/SD, 54DX/SD, 55A/B, 60A, 65A	

 Standard Inventory Parts